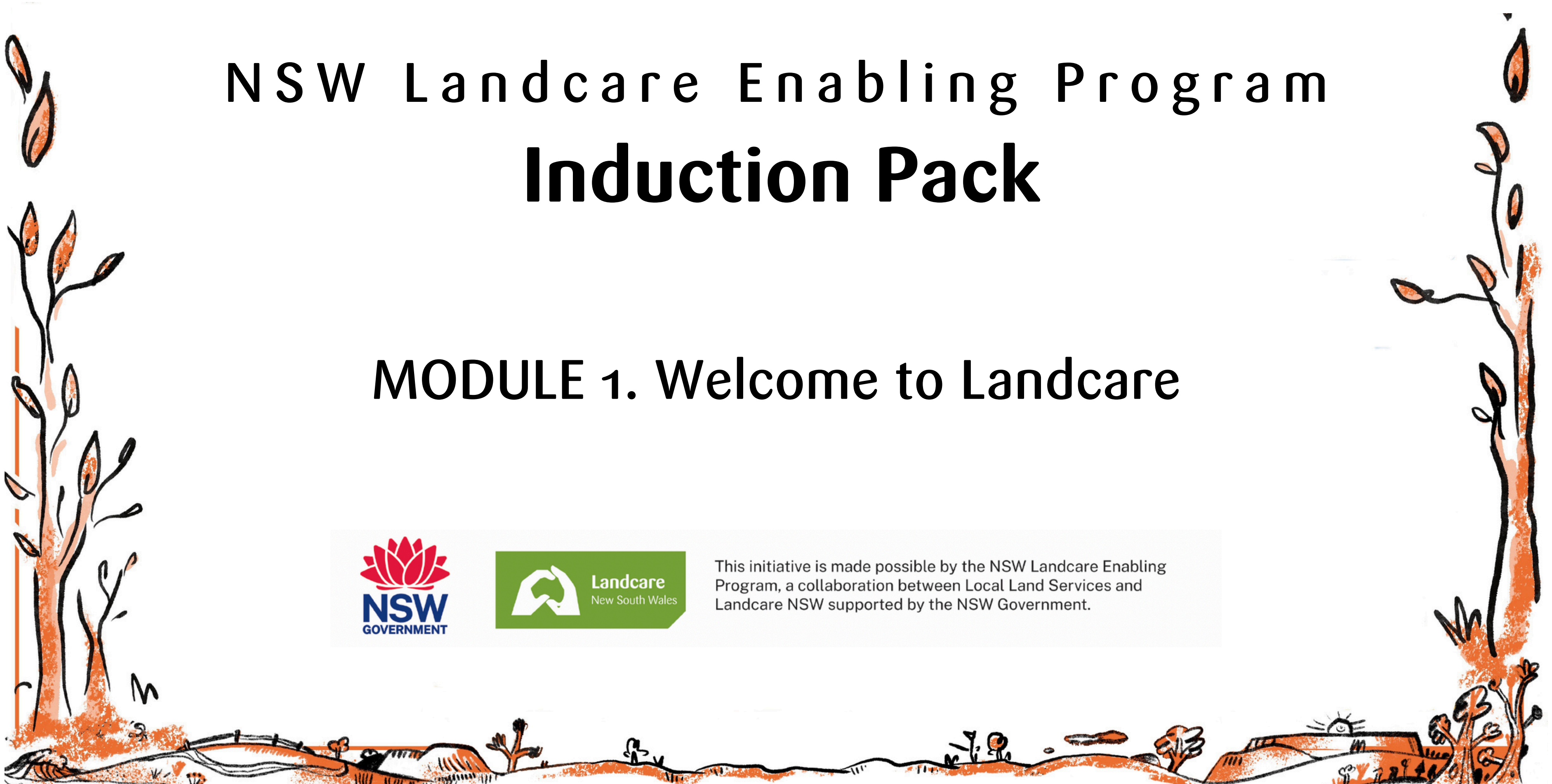


NSW Landcare Enabling Program Induction Pack

MODULE 1. Welcome to Landcare



This initiative is made possible by the NSW Landcare Enabling Program, a collaboration between Local Land Services and Landcare NSW supported by the NSW Government.



Welcome to the NSW Landcare Enabling Program



The funded roles of Local Landcare Coordinator, Regional Landcare Coordinator and the Regional Administration Support Officer are exciting and dynamic roles that sit at the grassroots of the community.

You have lots of scope in your role, and you are well placed to have a very positive impact on the groups, networks and communities where you provide support, and on the landscapes that you serve.

It's great to have you onboard!

An Overview of the Induction Pack

MODULE 1

Welcome to
Landcare

MODULE 2

Strategic
Links

MODULE 3

NSW Landcare
Enabling Program &
our stakeholders

MODULE 4

Key Work Areas
for funded staff



What is Landcare?

Landcare is a unique community-based approach to managing and restoring Australia's natural environment and improving the sustainability of agricultural activities.

Established more than 30 years ago, Landcare and its associated networks of community-based action have played a leading role, not only in Australia's natural resource management - including improving the sustainability of agricultural activities - but have led the world in developing and implementing community-based processes to shift attitudes and practices towards sustainable resource use and management at a local level (Love, 2011).



What is Landcare?

Landcare comes in many forms.

Landcare - Bushcare - Coastcare - Rivercare - Dunecare - Junior Landcare

These groups are augmented by countless associated projects and partnerships with like-minded groups and communities, extending across Australia's vast physical environment - from the coastline and urban areas, to agricultural and remote Aboriginal lands.



The first Landcare group started in November 1986



A group of farmers near St Arnaud, in north central Victoria formed the first Landcare group at Winjallock when farming neighbours recognised they could be more effective and have greater impact if they worked together to design and implement practical solutions to address their shared land management issues.

With this basic understanding as the foundation, Landcare has grown and now involves thousands of Australians working together to protect and improve the health of our land, biodiversity and waterways.

Landcare in NSW



3,000

Landcare groups

Almost 60,000 volunteers contribute their time each year to care for NSW landscapes.

There are over 3000 groups - ranging from small groups working on local reserves, beaches or farmland to larger district and regional scale Landcare groups and networks that support their members and member groups.

There are 11 Landcare regions that align with the Local Land Services regional boundaries.

Landcare groups are working in rural, urban, and coastal areas on both private and public land.

Landcare in Australia



Landcare became a national program in July 1989 when the Australian Government, with bipartisan political support, announced its “Decade of Landcare Plan” and committed \$320 million to fund the National Landcare Program.

Rick Farley (National Farmers Federation) and Phillip Toyne (Australian Conservation Foundation), worked with the Hawke Labor Government to create the National Landcare Program.

The growth of Landcare in Australia has been rapid, with 5000 groups formed across the country within the first 15 years. There are now approximately 6000 groups around Australia and 160,00 volunteers that generously give their time and energy to the cause.

Landcare groups work in partnership with government, corporates and Non Governmental Organisations (NGO) to achieve their aims.

Landcare Around the World



Today there are Landcare groups and projects in more than 20 countries.

In 2020, Global Landcare was established to support overseas communities to sustain their land, water and biodiversity.

Global Landcare is a not for profit community group which spreads the values and practices of Landcare across the globe. The goal of Global Landcare is to use our collective Landcare experience to help people in other countries manage their land and water resources more sustainably by:

- Promoting Landcare to national and international organisations as a sustainable way to manage natural resources for food production and resource conservation
 - Supporting a Landcare approach within local communities in various countries
 - Training participants across the globe in Landcare
 - Making connections between people and projects worldwide
-

Landcare 'caring hands' Logo

In Australia, the Landcare 'caring hands' logo/brand is widely recognised.

Landcare Australia owns and carefully manages the use of the registered trademarks of Landcare Australia, Junior Landcare, Coastcare, Landcarer (digital platform), Landcare Farming and the caring hands logos.

For brand guidelines, logo usage information or to create a group logo click [HERE](#)



Landcare Is...



A grassroots movement based on community-driven local action.



Farmers, rural landowners, urban residents and people in coastal areas working together to improve our natural environment.



Community-based volunteer groups and networks who plan and implement practical on-ground solutions to enhance, protect and restore our natural environment.



Landcare Is...

Landcare is a not-for-profit movement and receives funding from a number of sources including support from government.

The NSW Government provides support to Landcare through the NSW Landcare Enabling Program.
The Landcare Enabling Program is a collaboration between Local Land Services and Landcare NSW.



A Landcare Group's Characteristics

Landcare groups are autonomous and independent entities and they determine their own boundaries and activities.

There is no “typical” Landcare group, as they vary in:



Focus



Public profile



Level of formality



Group size



Type of activities



Organisational structure



**Group type and level of support
required by a Local Landcare
Coordinator**

The wellbeing benefits of participating in Landcare

Published in 2021, the findings by KPMG Australia in partnership with Landcare Australia, indicate Landcare volunteers enjoy substantial improvements to their mental and physical wellbeing – with a significant decrease to their healthcare costs.

[Download "Building Resilience in Local Communities" report here](#)



Surveying more than 1,000 Landcare volunteers and coordinators from Landcare groups, the findings in the report, titled Building resilience in local communities: The wellbeing benefits of participating in Landcare suggest substantial improvements in wellbeing and approximate savings from avoided healthcare costs of \$403 per individual per year. For the Landcare movement which exceeds 140,000 individuals, that number equates to \$57 million nationally.

The report goes on to address additional savings to the Landcare volunteer community relating to productivity, and benefits owing to natural disaster resilience and recovery, with the combined value amounting to \$191 million annually.

The economic benefits of participating in Landcare

[Download Landcare NSW regional data snapshots - Impact of a supported Landcare in NSW "](#)



A report by Aurecon Infrastructure Advisory, commissioned by Landcare NSW with support from NSW Local Land Services in 2018, studied Landcare in selected NSW regions, identifying and confirming substantial economic value of \$500 million per annum and a return on investment of \$6 for every \$1 invested in Landcare in NSW .

The study's author, Senior Economist, Kapil Kulkarni, said "The Aurecon team learned a lot about Landcare during the study and we were amazed by how much of a difference Landcare makes to communities and the environment across NSW.

"We couldn't quantify the benefits of all activities. However, we found significant economic benefits associated with the subset of activities we could value. The benefits are likely to be larger than what we are able to estimate based on the available data," said Mr Kulkarni.

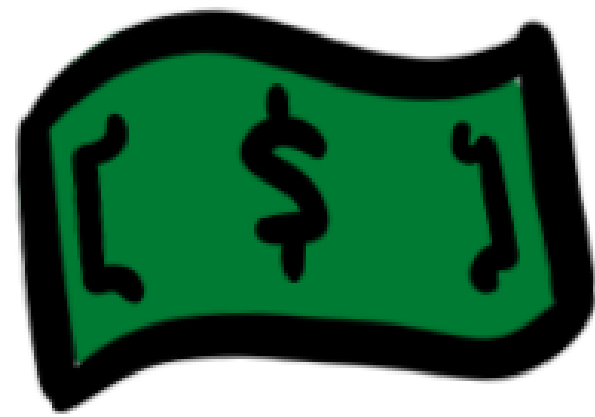
Landcare Model

A Landcare Group usually starts when community members with common objectives come together to tackle local land management or environmental issues. Issues such as weeds, pest animals, or the need to protect remnant native vegetation.

Local Landcare Coordinators can assist with the formation of new Landcare groups.



Landcare Model



Landcare groups develop their own priorities and projects and apply for funding to implement their projects



Volunteer committees oversee a Landcare group's operations, apply for project funding, and organise activities/events

Landcare Networks



- Some Landcare groups come together to form Landcare networks (i.e. a network of groups)
 - Across NSW these Networks are clustered together into Regions
 - Landcare groups, networks and regions collaborate to deliver events, share resources, build community capacity and apply for funding
 - Landcare NSW is the state peak body for Landcare groups, networks and regions within NSW.
 - It is easier for Landcare NSW to deliver state-wide projects, with Landcare networks and regions rather than 1000s of Landcare groups. This leads to more efficient and better support and outcomes for Landcare.
-

Landcare Networks



Can be based around a waterway catchment area



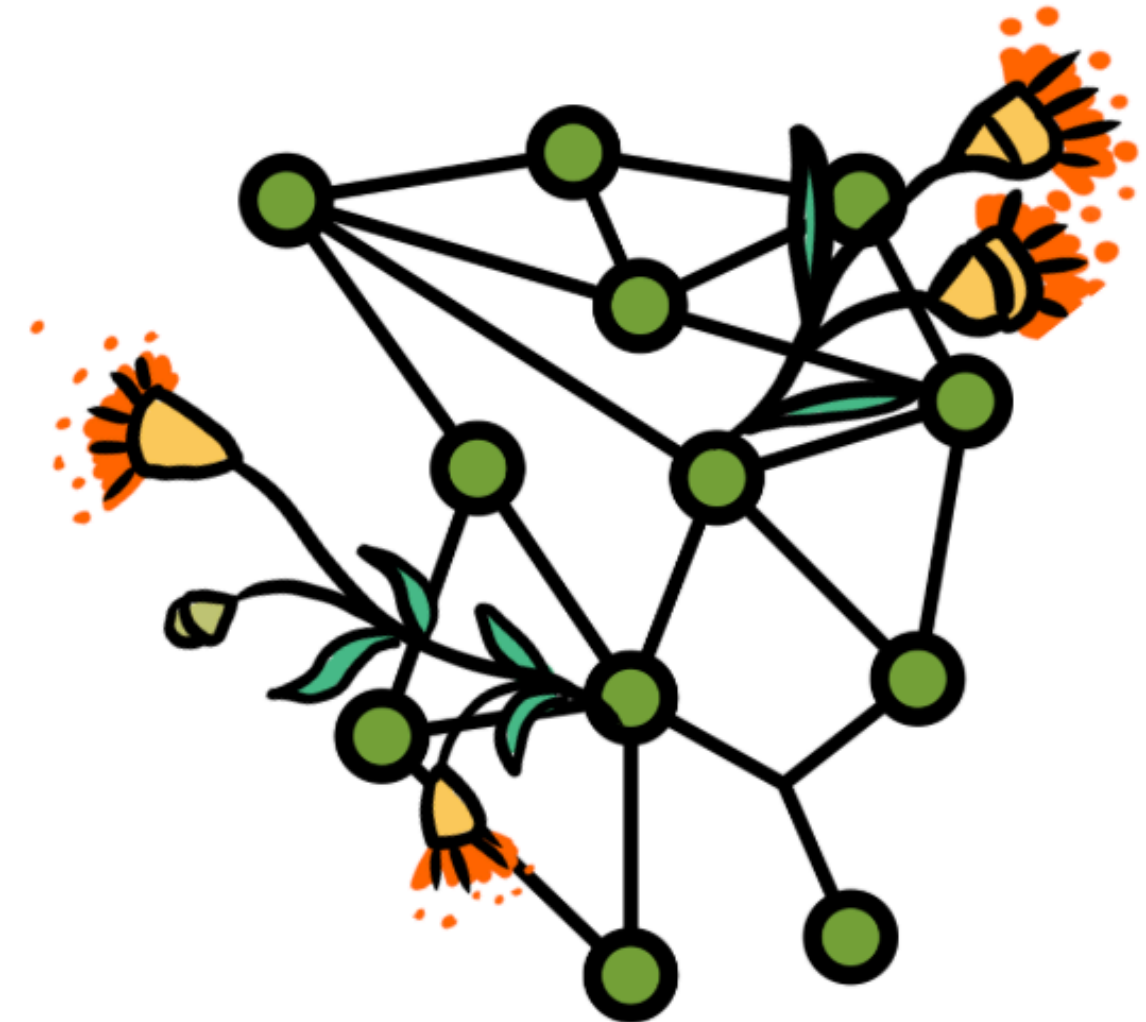
Take a more landscape-based approach to local land management and environmental issues



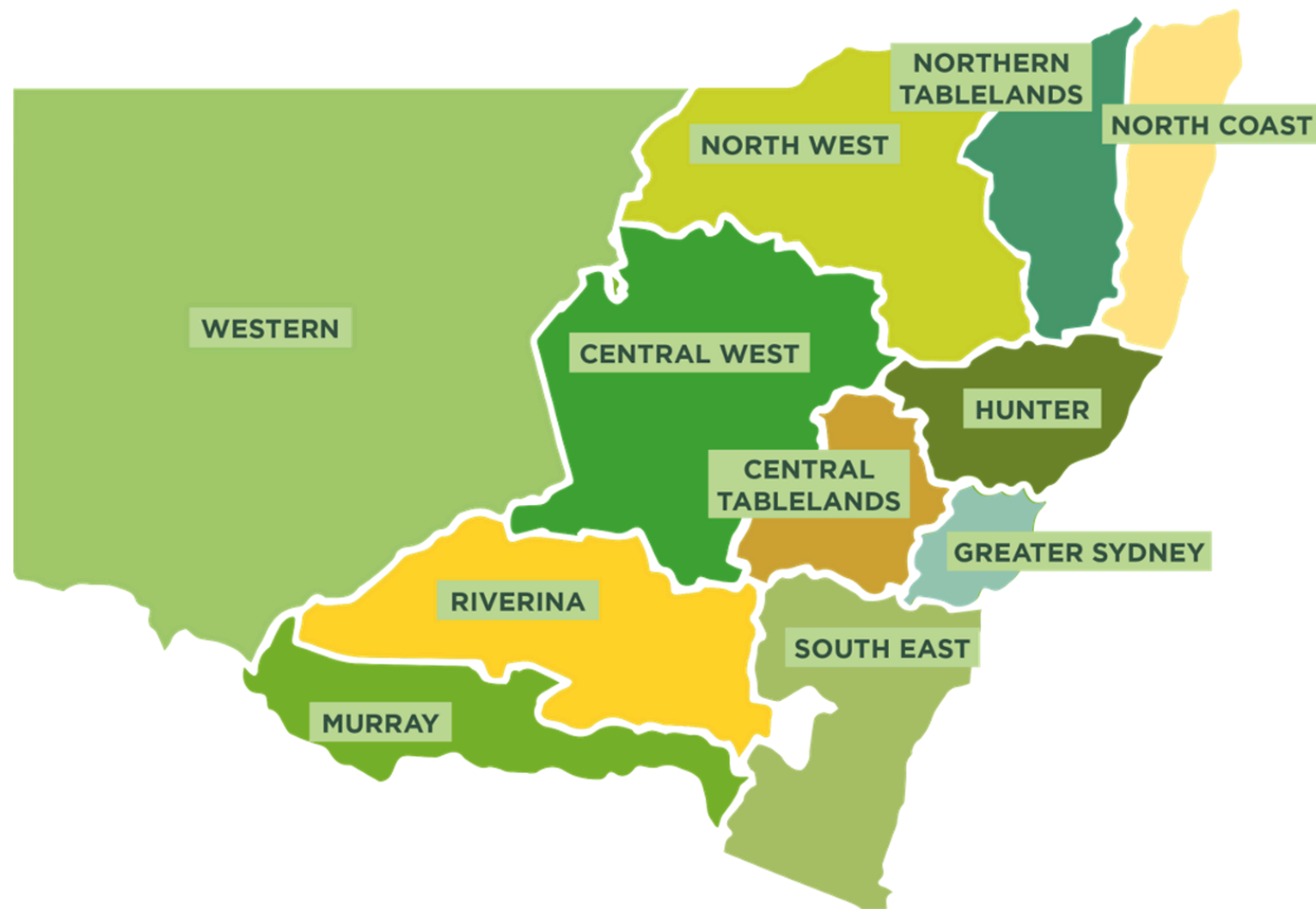
Coordinate activities to achieve landscape scale or catchment wide outcomes



Create efficiencies by reducing duplication across shared activities and requirements



Landcare Regions



- There are eleven (11) Landcare Regions within NSW.
- The Landcare Regional Body is the representative body for all members and Landcare groups within a recognised region.
- Regional host organisations can be characterised as larger NSW Landcare groups that are responsible for the strategic direction and regional coordination of Landcare activities in their region.
- Regional host organisations generally support smaller NSW Landcare groups and networks to plan and deliver local Landcare projects, coordinate volunteers and participate in regional and NSW-wide activities.

Funding Deed Holder Responsibilities

For the purpose of the Landcare Enabling Program, Landcare groups or organisations referred to as funding deed holders, are the grant recipient of Phase 1 funding to employee funded roles (Local Landcare Coordinators, Regional Landcare Coordinators and Regional Administration Support Officers). The funding deed holders have the following responsibilities;



Hold the contracts with Local Land Services



Provide support and guidance through things like HR, day to day management for staff and Communities of Practice



Keep you safe at work



Networking with Landcare and other industries



Provide good governance through things like strategic direction, steering committee, program reporting and financial management

Success of Landcare

The success of the Landcare model can be attributed to the following:



Its community 'owned' and driven



Landholder and community participation are keys to success



Comprised of group members and landholders with a strong sense of stewardship of the land and appreciation of our natural environment



Provision of funding (e.g. government) to enable delivery of projects and support provided by Landcare staff



Social side - brings community members together



Has had bi-partisan political support

Landcare's people are its greatest asset!

Landcare people are its greatest asset



And that includes you!

Dig Deeper



Henry, A., Koech, R. and Prior, J. (2016).

[The value of Landcare to the Australian community.](#)

Paper prepared for Landcare NSW, December 2016.



[Landcare Webinar Series](#)

Presented by Landcare Australia

24 videos on varied topics that resonate for Landcarers accross the country



[Building Global Sustainability Through Local Self-Reliance: Lessons From Landcare](#)

A chunky exploration of explore how the Landcare principles can be usefully applied to tackle multiple global problems, Produced by Australian Centre for International Agricultural Research (ACAIR)

Download for free or order your copy here



This initiative is made possible by the NSW Landcare Enabling Program, a collaboration between Local Land Services and Landcare NSW supported by the NSW Government.

